



Justin Sugcang, center, with the officials of the RFM Foundation, from left: CEO of Sta. Elena Construction and Development Corp. Alice Eduardo, CHED Chairperson Dr. Patricia Licuanan, Secretary to the Cabinet Jose Rene Almendras, and RFM Corp. President Joey Concepcion

## Lasallian named as one of PHL's outstanding students

De La Salle University's Justin Sugcang was one of the ten honorees of the RFM Foundation's Ten Outstanding Students of the Philippines (TOSP). The awarding rites were held last August 7 at the Kalayaan Hall of the Malacanang Palace.

Ten students out of 30 national finalists were selected from the country's top universities. Sugcang made it to the final roster due to his exemplary track record as a law student in DLSU.

He also served as a lecturer in the University's Psychology Department and was appointed as a member of the Legal Education Board. He was also part of the baseline study

on Philippine Legal education by the University Research Coordination Office.

Two other Lasallians vied for the final TOSP slots for winning at the NCR level—student leaders Miguel Moreno and Ira Gayll Zamudio.

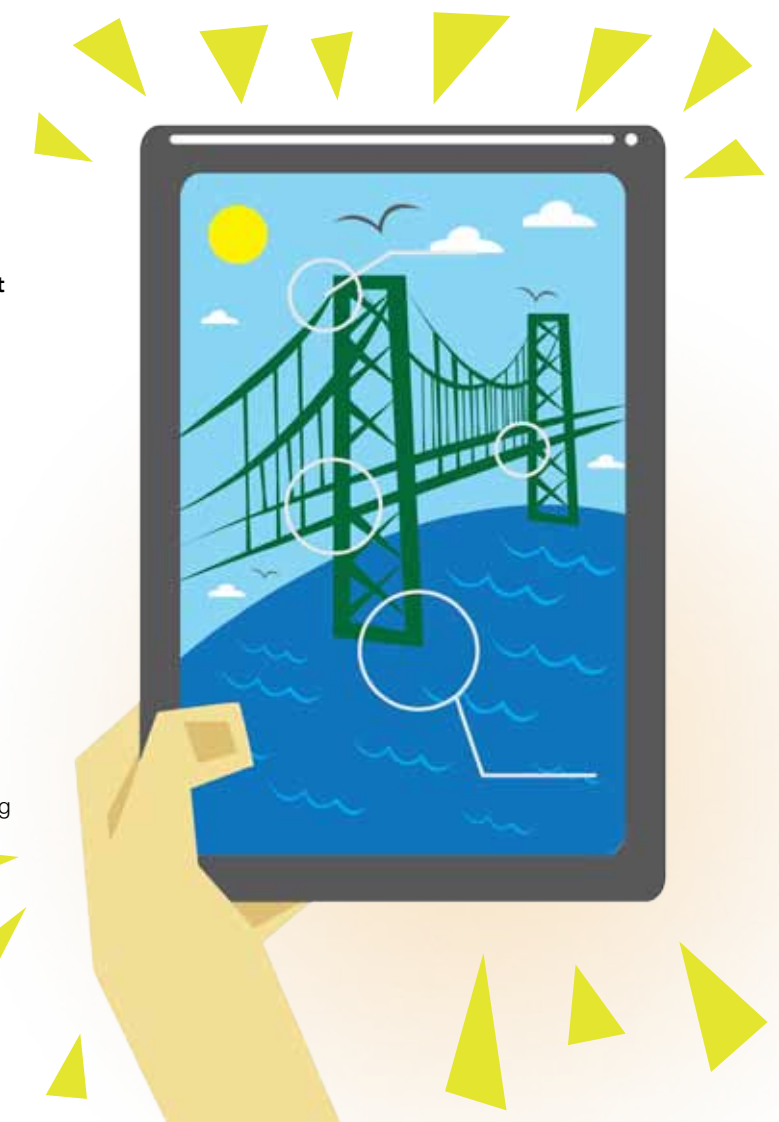
Launched in 1961, The RFM Foundation's TOSP is an awards program that aims to find young role models of the country who have embodied academic excellence, exemplary leadership and a deep sense of social responsibility, all anchored on good moral values.

## Faculty develops structural engineering app

Gokongwei College of Engineering (GCOE) Civil Engineering Assistant Professor Alden Paul Balili developed Android applications on truss analysis, foundation design, and engineering mechanics, which he presented during the 37th International Association of Bridge and Structural Engineers Symposium held in Madrid, Spain last September 3-5.

His paper "Development of Structural Engineering and Educational Application Using Gamesalad" was in line with the symposium's theme "Engineering Progress for Nature and People." The topics discussed in the event generally revolved around innovative design concepts and sustainable infrastructure.

Keynote topics included challenges that bridge engineers face in China; optimizing maintenance efforts for infrastructure; and teaching methods to produce creative structural engineers.



## FACTS and FIGURES

# 2014 PILLARS of Lasallian Educators Excellence Awards

### MOST PRODUCTIVE DEPARTMENTS IN RESEARCH



HUMANITIES  
AND EDUCATION

1st  
PLACE

COUNSELING AND EDUCATIONAL  
PSYCHOLOGY DEPARTMENT

2nd  
PLACE

HISTORY DEPARTMENT



SCIENCE  
AND TECHNOLOGY

1st  
PLACE

CHEMISTRY DEPARTMENT

2nd  
PLACE

ELECTRONICS AND  
COMMUNICATIONS ENGINEERING  
DEPARTMENT



SOCIAL SCIENCES  
AND BUSINESS

1st  
PLACE

INTERNATIONAL STUDIES  
DEPARTMENT

2nd  
PLACE

MANAGEMENT AND ORGANIZATION  
DEPARTMENT

SOURCE: UNIVERSITY RESEARCH COORDINATION OFFICE



is published bi-weekly by the Office for Strategic Communications (AH-21F, intercom 144). Editorial deadline is 3 p.m. Tuesdays. Contributions should include the name, office and signature of the sender. Materials may be edited for clarity or space. 2401 may be accessed online through the URL: <http://www.dlsu.edu.ph>

**Executive Director** | Jose Mari Magpayo  
**Director for Operations** | Johannes Leo Badillo  
**Editorial Supervisor** | Ruby Carlos  
(ruby.carlos@delasalle.ph)

**Writers** | Anne Alina-Acuña, AA dela Cruz-Marcelo,  
Arie Koc, Donna Manio, Roy Monarch Sy  
**Editorial Support** | Alaric Lopez de Leon  
**Multimedia Coordinator** | Magsy Magbanua  
**Student Assistant (Photographer)** | Alecs Ongcal

**Creative Director** | Peter Varona  
**Art Director** | Mark Louie Esteves  
**Graphic Artists** | Miguel Pabello, Chris Perez  
**Secretary** | Virginia Umacob-Gases  
**Office Assistant** | Raymond Menor



THE OFFICIAL NEWSLETTER OF  
DE LA SALLE UNIVERSITY

NUMBER 09  
VOLUME 46  
07 OCT 2014



INSIDE:

Faculty develops structural engineering app

Congress honors DLSU prof as Outstanding World Researcher

Lecture tackles visibility through technology for sustainable chain

Survey on Philippine entrepreneurship

## DLSU holds 2014 Pillars of Lasallian Educators Excellence Awards



Top photo shows, from left, Society of Fellows President Dr. Wilfredo Licuanan, inducted member Dr. Alfredo Robles, and OIC President and Chancellor Br. Dennis Magbanua FSC. Lower photo shows the University Fellows with Br. Michael Broughton FSC and Br. Dennis.

In conjunction with the celebration of National Teachers' Month, De La Salle University held this year's Pillars of Lasallian Educators Excellence Awards at the Don Enrique T. Yuchengco Hall last September 29.

Leading the list of honorees was International Studies Department's Dr. Alfredo Robles, Jr., who was inducted as member of DLSU's distinguished group of Lasallian educators, the Society of Fellows.



### Pillars from page 1

Robles has two doctorate degrees: one in Political Science in Syracuse University and another in International and European Studies from Universite de Paris. He was awarded with Chevalier dans l'orde de Palmes academiques by the French Ministry of National Education. Last year, he was named as one of Metrobank's Outstanding Teachers.

Meanwhile, three faculty members received the top Pillar awards: Dr. Francisco Magno of the Political Science Department, who was bestowed the St. Jaime Hilario Pillar of Lasallian Excellence Award in Community Engagement; Dr. Anthony SF Chiu of Industrial Engineering Department, who was named as winner of the St. Miguel Febres Cordero Pillar of Lasallian Excellence Award in Research; and Dr. Andres Winston Oreta of Civil Engineering Department, who received the St. Benilde Romancón Pillar of Excellence Award in Teaching.

The event also recognized faculty members who were promoted or who earned their permanency status; researchers with outstanding publications; most productive departments in research; departments with best attendance; Faculty Association awardee; and the winner of Students' Search for Outstanding Teachers.



Dr. Alvin Culaba

## Congress congratulates faculty as Outstanding World Researcher

**DLSU University Fellow and NAST Academician Dr. Alvin Culaba** was recently honored as the "Outstanding World Researcher of 2014" by the International Association of Multidisciplinary Research (IAMURE).

Culaba was presented with the award because of the numerous scientific articles that he authored and co-authored, which were published in various journals such as the International Journal of LCA, the Journal of Cleaner Production, the Clean Technology and Environmental Policy, and the industry guidebook-EMS.

The Outstanding World Researcher Award is given every year to researchers whose scientific articles reach international publication and gain worldwide recognition.

Consequently, a House Resolution was passed by Rep. Eric Olivarez commending and congratulating him for his award.

The resolution also commended him for his consultancy work with various government agencies, as well as his work with special government projects.

## Environment forum draws on University experience

To encourage Lasallians to commit and act for a green environment, the Office of the Vice Chancellor for the Lasallian Mission and the Student Affairs Office conducted an environmental forum recently.

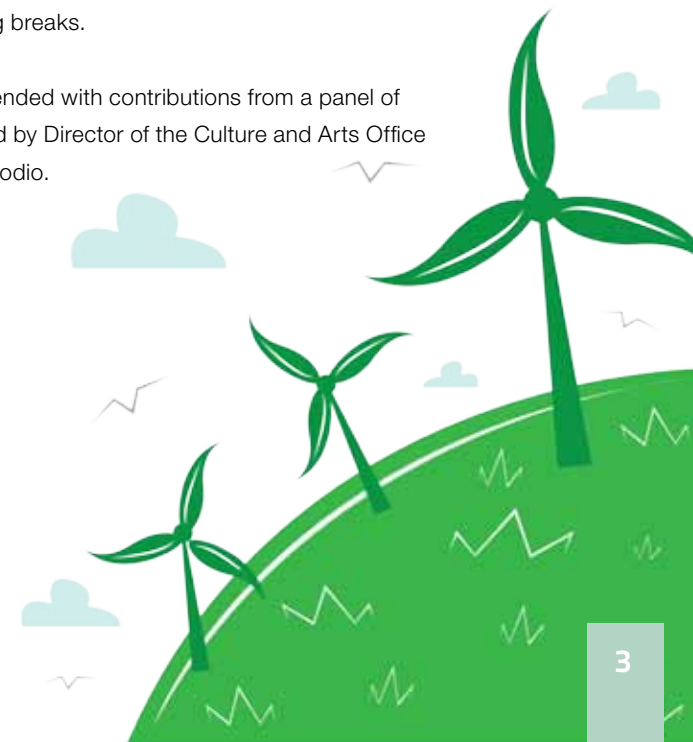
Spearheaded by the Community Engagement Committee, the forum showcased insights on the spirituality of creation from Fr. John Laydon, MSCC. Campus Sustainability Office Director Antonio Carlos Maralit also talked about the Lasallian way of looking at environmental care and sustainability.

Fr. Laydon emphasized the synthesis of scientific knowledge and faith as a lens to look into issues. His presentation provided a pastoral letter calling for urgency in environmental recovery in the face of multiple natural and man-made disasters.

Maralit linked and contextualized the sharing of Fr. Laydon by using Lasallian prayers as a motivation in caring for

the environment. He also presented current university efforts in reducing carbon footprints through hard and soft technologies like the use of energy efficient light bulbs and mainstreaming the turning off of air-conditioning units and lights during breaks.

The forum ended with contributions from a panel of reactors, led by Director of the Culture and Arts Office Glorife Samodio.



## Lecture tackles visibility through technology for sustainable production chain

**DLSU's Distinguished Visiting Professor Dr. Ming Kim Lim** delivered a lecture entitled, "The Role of Technology in Improving Visibility in Sustainable Chain," to the academic community last August 8.

A professor of Supply Chain and Logistics Operation from University of Derby in UK, Lim focused on Radio-frequency Identification, or RFID technology, which refers to the wireless use of electromagnetic fields to transfer data for automatically identifying and tracking tags.

Lim spent a month as a visiting professor under a DOST ERDT grant. He conducted a series of team-teaching lectures, roundtable discussions, and research collaborative workshops on policy and business dimensions of research centers and administrative units.

Hosted by the Industrial Engineering Department, Lim shared his administrative and policy experiences in UK, as well as his adjunct professorship at the Massachusetts Institute of Technology Center of Transportation and Logistics.

## DLSU Chorale celebrates 27th year with concert

The internationally-acclaimed **De La Salle University Chorale** celebrates their 27th year with a concert, "From Here On After" on October 30, 7:30 p.m. at the Teresa Yuchengco Auditorium.

The DLSU Chorale received the National Commission for Culture and the Arts Ani ng Dangal for Music early this year. In 2013, the DLSU Chorale bagged 13 awards from several international competitions in Europe including eight gold medals, two grand prix awards, two silver medals, and one special award.

The chorale competed in Kaunas Cantat International Choir Competition in Lithuania, 41st Festival of Songs: International Choir Festival in the Czech Republic, 11th International Choir Competition "Antonio Vivaldi" in Karpenissi, Greece, and 19th International Competition of Sacred Music in Preveza, Greece.

Ticket inquiries may be forwarded to Justin Cudiamat at mobile number 0915-4010153 or Angelou Gonzales at 0917-4129224.



The De La Salle University Chorale



The DLSU project proponents

## Survey on Philippine entrepreneurship

The **DLSU Angelo King Institute** led the launching of the **Entrepreneurship in the Philippines 2013 Report** last September 5 at the Roof Deck of the Henry Sy, Sr. Hall.

The study is conducted as part of the Global Entrepreneurship Monitor (GEM) Project, an annual assessment of the entrepreneurship indicators across different countries. DLSU runs the GEM project in the Philippines and is lead by national team leader Dr. Aida Velasco, Associate Professor of the Decision Sciences and Innovation (DSI) Department.

Co-authors of the report include School of Economics Associate Professor Dr. Gerardo Largoza and Assistant Professor Mitzie Irene Conchada; DSI Associate Professors Dr. Brian Gozun and Dr. Emilina Sarreal; and Financial Management Associate Professor Dr. Junette Perez.

The 2013 Philippine study surveyed 2,500 adults, aged 18-64 representing the 17 regions in the country. The survey described the entrepreneurship indicators in the country in terms of entrepreneurial attitude, activity, and aspiration of Filipinos.

The entrepreneurial factor conditions that act as drivers or barriers to entrepreneurship were identified through a survey of 39 experts representing entrepreneurs, policy makers, professionals, and socio-civic organizations. Results of the study for the Philippines were also compared to the different economies that participated in the GEM 2013 global study on entrepreneurship.

According to the report, the Philippines exhibits the highest rate of business start-up in Asia Pacific and South Asia Region but also has the highest business discontinuance rate. Majority of the entrepreneurs in the Philippines are driven by necessity given the high unemployment rate and few job opportunities in the country.



## Benches for Scholarships

The **Advancement and Alumni Affairs Office** launched a project dubbed "Benches for Scholarships." The drive aims to encourage the University's alumni and friends to support the institutional campaign to keep at least 25% of the student population on scholarship.

Through this scholarship fundraiser, the alumni will get the opportunity to have their names placed on the benches around the campus. They also have the option to name those benches after their organization, batch, family, or even group of friends.

Proceeds will go to the Vaugirard Scholarship Program, which provides 50 scholarship slots every year exclusively for graduates of Philippine public high schools, and the Lasallian Legacy Fund, whose beneficiaries come from families with an annual household income of P700,000 or lower.

For details on how to donate, contact AAO's Mito Dizon at cellphone no. (0917) 827-7923 or ramoncito.dizon@dlsu.edu.ph.

Wherever I go I will find you,  
my God ---St. John Baptist de La Salle